

# Interpreter Guide



Find out more about the Lake Biwa area.

## Takashima City Regional Licensed Guide Interpreter



Would you like to explore the Takashima area with a local tour guide? Traveling together, you will undoubtedly have a memorable and precious time in the Takashima area. I'm looking forward to meeting you!



## Nagahama City Regional Licensed Guide Interpreter



We are specialists in tourism guiding with extensive knowledge and a hospitable spirit about Nagahama City. We will share all the charms, including history, culture, local lifestyle, and nature experiences, to make your journey in Nagahama truly special. Please feel free to contact us for any inquiries.



# Northern Lake Biwa Area Tourist Guide

### Access by car



- To Takashima City (Takashima City Hall)  
From the direction of Osaka/Kyoto  
From Meishin Expressway Kyoto Higashi IC, approx. 80 mins.
- From Nagoya  
Hokuriku Expressway, approx. 40 mins from Kinomoto IC.
- From Hokuriku  
Hokuriku Expressway, approx. 50 mins from Tsuruga IC.

- To Nagahama City (Nagahama IC)  
From the direction of Osaka  
Meishin Expressway, approx. 90 mins from Suita IC.
- From Kyoto  
Meishin Expressway, approx. 60 mins from Kyoto Higashi IC.
- From Nagoya  
From Meishin Expressway Ichinomiya IC: approx. 40 mins.
- From Kanazawa  
Hokuriku Expressway, approx. 110 mins from Kanazawa Nishi IC.

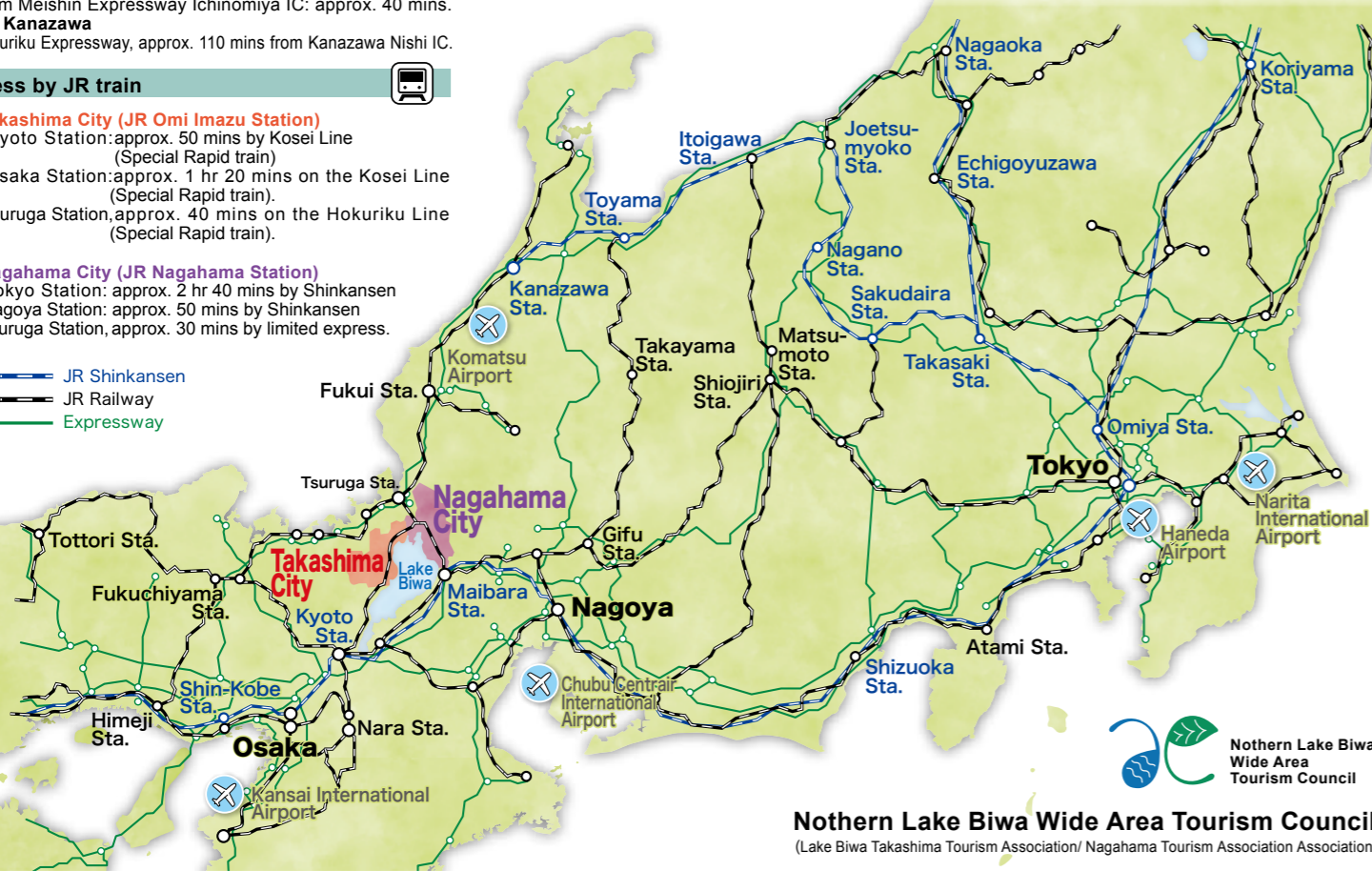
### Access by JR train



- To Takashima City (JR Omi Imazu Station)  
From Kyoto Station: approx. 50 mins by Kosei Line (Special Rapid train)
  - From Osaka Station: approx. 1 hr 20 mins on the Kosei Line (Special Rapid train).
  - From Tsuruga Station: approx. 40 mins on the Hokuriku Line (Special Rapid train).
- To Nagahama City (JR Nagahama Station)  
From Tokyo Station: approx. 2 hr 40 mins by Shinkansen
  - From Nagoya Station: approx. 50 mins by Shinkansen
  - From Tsuruga Station: approx. 30 mins by limited express.

- JR Shinkansen
- JR Railway
- Expressway

## Access Map



Northern Lake Biwa Wide Area Tourism Council  
(Lake Biwa Takashima Tourism Association/ Nagahama Tourism Association)

Date of issue: March 2024



TAKASHIMA

NAGAHAMA

Welcome to the Northern Lake Biwa area, where you can discover the wonderful nature in all seasons.

Northern Lake Biwa Wide Area Tourism Council

# Northern Lake Biwa Area Tourist Guide

## Chikubushima Cruise

Chikubushima Island is a power spot on Lake Biwa. The whole island is surrounded by a mysterious atmosphere. There are many places of interest, such as Hagonji Temple and the national treasure Hagonji Karamon Gate.



← Biwako Kisen Imazu Port



← Biwako Kisen Nagahama Port

## Check the QR code for Accommodation information.



← Takashima City



← Nagahama City

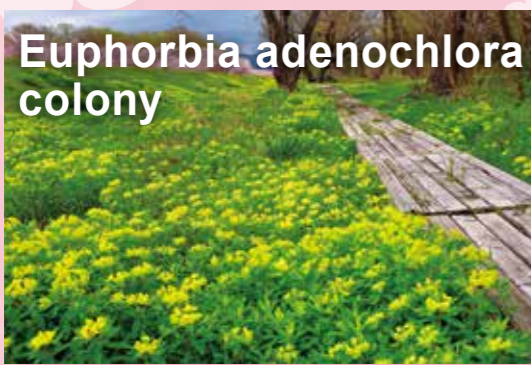




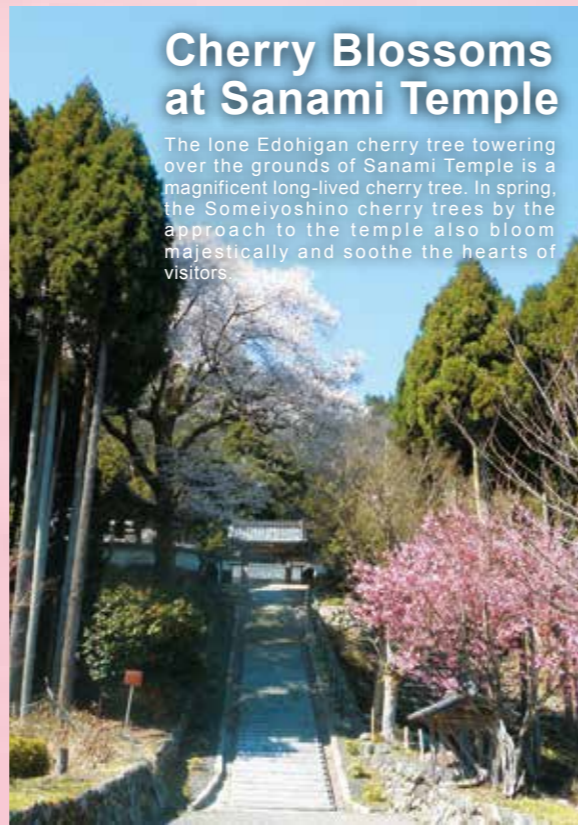
## The Cherry Blossoms of Kaizu-Osaki

The Cherry Blossoms of Kaizu-Osaki, which has been selected as one of the "100 Best Sakura Spots in Japan". From old cherry trees over 80 years old to young trees that will be handed over to the next generation, there are approximately 800 brilliant Somei-yoshino cherry trees for 4km along the shore of Lake Biwa.

## Euphorbia adenochlora colony



Yellow flowers on the shores of Shin-Asahi from late April to May. Enjoy walking, photos along with the scenery of Lake Biwa.



## Cherry Blossoms at Sanami Temple

The lone Edohigan cherry tree towering over the grounds of Sanami Temple is a magnificent long-lived cherry tree. In spring, the Someiyoshino cherry trees by the approach to the temple also bloom majestically and soothe the hearts of visitors.



## Avenue of Metasequoias

About 500 dawn redwoods are planted along the road that leads from Agricultural Park Makino Pickland to the Makino Highland over a length of 2.4km.



## Koshoji Temple

Koshoji is a temple of Soto Buddhism. Master Dogen recommended an ancestor of the local Kutsuki clan to build it here. The former Shurinji Garden, known as Ashikaga Garden, on the temple grounds was designated as a national scenic beauty in 1935. The camellia flowers and autumn leaves in the precincts are well known.



## Sea of clouds, autumn leaves of Onyudani

Border between Shiga and Fukui prefectures. Colored leaves must be at their best in late October. A superb view of a sea of clouds in early morning, weather permitting.



## Biwako-Hakodateyama



You can easily reach the top of the mountain at an altitude of 690m with a gondola. The panoramic view of the magnificent Lake Biwa from the hill where you can see the Lake is popular. You can enjoy various attractions such as summer mountains, Kokia Park in autumn, and skiing in winter.

# Takashima

The north shore area of Lake Biwa is dotted with spectacular scenic spots. Visit during the best season!

## Activities on Lake Biwa

Based in the northern part of Lake Biwa where beautiful nature remains, you can relax while enjoying nature. Kayaking and SUP (stand up paddle surfing) that can be easily enjoyed regardless of age and gender are popular.

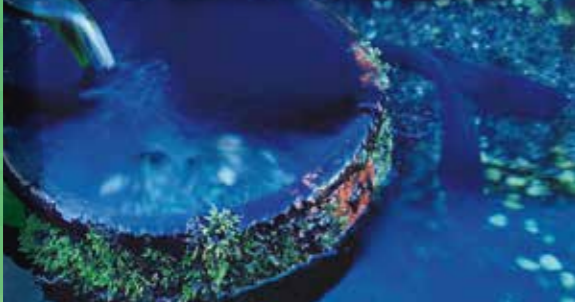


## Swimming hole(Beach)

White sandy beaches ideal for lake bathing and camping. The landscape looks like an ocean and the water is so clear that you want to dive in.



## Harie Shozu no Sato



Clear and rich spring water is called Shozu in Harie area, Shin-Asahi. Kabata is a system which uses the water ways running around the village and the water for daily life. Booking and guide fees are required.

## Takashima City Makino Agricultural park Makino Pickland

You can experience picking of various seasonal fruits such as cherries, blueberries, grapes, and chestnuts. Cafes where you can admire the dawn redwoods are popular.



## Ski resort



There are four ski resorts in Takashima. Each of them has a well-equipped kids' area and other facilities, and is recommended for snow play and novice skiers.



## Shirahige-jinja Shrine

The oldest shrine in Omi, built over 2,000 years ago. It is also called "Itukushima of Omi". Selected as a Japanese heritage site, it is visited by many worshippers from both domestic and overseas.



## Metasequoia Avenue in winter

The rows of trees with snow on their branches can only be seen when the weather is favourable. Their dignified appearance in the silvery countryside is also a unique winter sight.



## Otome pond

This inner lake is used as the outer moat of Omizo Castle, a water castle that cleverly utilises Lake Biwa, and the lake has a rich history and romantic atmosphere.

Spring



Summer



Autumn



Winter



# Gourmet Foods in Takashima



## Saba-zushi (mackerel sushi)

Saba-zushi (sushi of mackerel), a Kyoto speciality, is a feast in Kutsuki village, where fish was on its way of transport to the capital in the past. It is still served at festivals and seasonal events.



## The seasoned chicken

Sprinkled with homemade sauce is called "Tonchan" and has been loved as a familiar soul food locally. Today, it is a representative of Takashima's local gourmet food, and is an essential ingredient especially for BBQ.



# Takashima Souvenirs



## Ado Berry

Its fresh fruits are rare enough to be called "phantom fruits". You can enjoy sweets, desserts and drinks made using Ado Berry regardless of the season.



## The Omi Folding Fan

The Omi Folding Fan is made with Takashima fan ribs. Takashima boasts of a domestic share of fan ribs over 90%. The Omi Folding Fan is produced by many craftsmen.



## Wa Rosoku

Wa Rosoku (Handmade Japanese Candles) are made from a very precious plant called the haze (Japanese endemic species).



## Takashima canvas

Takashima canvas has a long history back to the Edo period. The high quality of the materials is nurtured by the climate of Lake Biwa and the reliable manufacturing method.



## Omi beef

Omi beef, one of the three major Japanese-produced beefs, has been nurtured by blessed nature and craftsmanship. You can eat high-quality Omi beef in Takashima City.



## Takashima local sake

Many delicious local sakes with unique characteristics are produced here, making use of high-quality rice, rich underflow water and a cool winter climate. In some breweries you can enjoy a brewery tour.



## Eels



Eels grilled with special sauce, which has been handed down in the local food culture, are excellent. It's a traditional taste in Takashima.



## Takashima Chijimi

Takashima Chijimi, is famous for being an airy and comfortable cloth with folds suitable for the hot and humid weather in Japan.

## Metasequoia chocolate

Very popular souvenir chocolate sold exclusively in Takashima. The packaging features the famous Metasequoia trees and includes an original picture postcard.



### Recommended shops /



- Various crafts and food products from Takashima are sold at roadside stations in the city.
- Roadside Sta. Toju-no-sato Adogawa
- Roadside Sta. Makino Ossaka Toge
- Roadside Sta. Kutsuki Shin Honjin
- Takashima Marugoto Department Store
- Ukawa Farm Mart





### Daitsuji Temple Japanese Andromeda Bonsai Exhibition

A distinctive bonsai exhibition featuring Japanese andromeda is held at Daitsuji Temple. Approx. 50 pots of Japanese andromeda with charming red, white, and pink flowers delight the visitors.



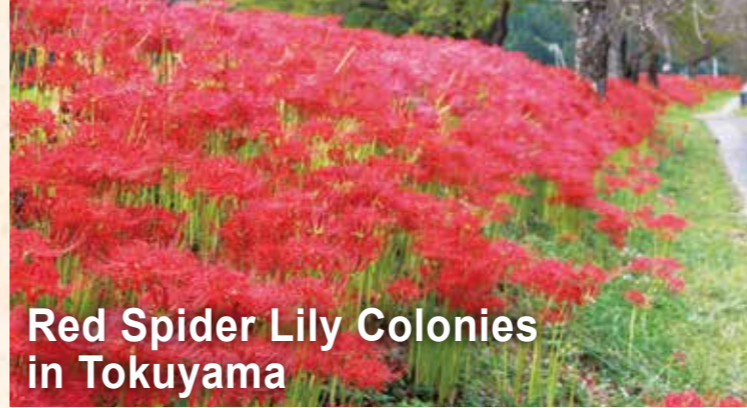
### Cherry Blossoms Along the Takatoki River

In northern Nagahama, nearly 500 Somei Yoshino cherry trees create a picturesque scene stretching for about 1 km along the Takatoki River. Renowned as one of the premier cherry blossom viewing spots, this location offers visitors the opportunity to stroll under a cherry blossom tunnel.



### Cherry Blossoms in Hokoan Park

Designated as one of the 100 Best Sakura Spots in Japan, Hokoan Park is adorned with cherry trees around the Nagahama Castle History Museum. In spring, over 600 cherry trees, including the Somei Yoshino variety, burst into full bloom and create a breathtaking view.



### Red Spider Lily Colonies in Tokuyama

In the Tokuyama district of Nagahama, approx. 100,000 red spider lilies bloom in clusters, creating a stunning view that resembles a red carpet stretching for about 1 km.



### Nagahama Hikiyama Festival

The annual festival of Nagahama Hachimangu Shrine in April, which traces its origins back to the time when Hashiba (Toyotomi) Hideyoshi was a lord of Nagahama Castle. The highlight is the gorgeous floats called hikiyama and the kabuki performed by children. Of the 12 floats, four make an appearance each year and a children's kabuki is performed on each float.



### Omi Kohoan Temple

The family temple of Kobori Enshu, a renowned tea master of the Edo period (1603-1868). It is known as a maple viewing spot, where visitors can enjoy the vibrant autumn foliage in mid-November.



### Odani Castle Site

The site of Odani Castle, once belonging to the Azai Clan who ruled Nagahama, features moats and stone walls that are still in excellent condition today. It is a wonderful spot to admire the autumn foliage of maple trees.



### Hokkoku Kaido Kinomoto-juku

Kinomoto flourished as a lodging town at the intersection of the Hokkoku Kaido and the Hokkoku Wakiokan roads, attracting a significant number of travelers and worshippers to the Jizo-in Temple. It has preserved its original scenery to this day, and the annual Jizo Festival is held in August, featuring fireworks on the final day.



# Nagahama

Where history, tradition, and old and new cultures meet



### Nagahama Kita-Biwako Great Fireworks Festival

The annual fireworks festival is a summer tradition in the northern Lake Biwa area. In collaboration with various performances, fireworks illuminate the summer night sky.



### Migratory Birds

The northern lake area, one of Shiga's largest migratory bird destinations, is home to various wild birds, including Tundra swans and Steller's sea eagles during winter.



### Ski Resort

The ski resort in the Yogo district, one of the prefecture's heaviest snowfall areas, offers skiing and snowboarding for both beginners and advanced skiers.



### Water Activities

The northern Lake Biwa area boasts abundant natural beauty. In the bay surrounded by mountains and on the tranquil lake, visitors can enjoy water activities such as kayaking, canoeing, and stand-up paddleboarding while admiring the breathtaking scenery where the sky meets the lake.



### Ai-no-Tani Lotus Fields

Lotus fields are scattered throughout Nagahama. In the terraced paddies spanning about 3 hectares in Fusecho, known as "Ai-no-Tani" or "Valley of Love," white and pink lotus flowers bloom from late June to early August.



### Forest of Yamakado Water Source

The site boasts Shiga's largest wetland, featuring unique flora and fauna. It is home to various precious plants and animals and offers beautiful nature in every season, including cherry blossoms in spring, fresh greenery in summer, and foliage in autumn.



### Nagahama Plum Bonsai Exhibition

A popular New Year's event in the Kansai region. At the venue, Keiunkan, about 90 plum bonsai out of a total of 300 pieces are displayed according to their blooming condition, including trees over 3 meters high and over 400 years old.



# Nagahama Tourist Attractions



**Kurokabe Square** A renowned destination nestled in the historic town of Nagahama, stretching along the Hokkoku Kaido road. Glass shops, workshops, galleries, hands-on classes, restaurants and cafes are scattered around the Kurokabe Glass Shop, a former bank building built in the Meiji era.



## Nagahama Railway Museum

A museum where visitors can see, touch, and learn about Japan's railroad history. The museum exhibits valuable railroad heritage, including the oldest existing station building in Japan and the first unit of the ED70 series AC electric locomotive.



## Daitsuji Temple

The temple was built in the early 17th century, and its main hall and great hall are believed to be remnants of Fushimi Castle in Kyoto. You can sense the magnificent culture of that era throughout the site.



## Yanmar Museum

A hands-on museum where visitors can learn through sight, touch, and experience. Activities such as virtual agricultural experiences and operating boats and construction equipment are available to enjoy.

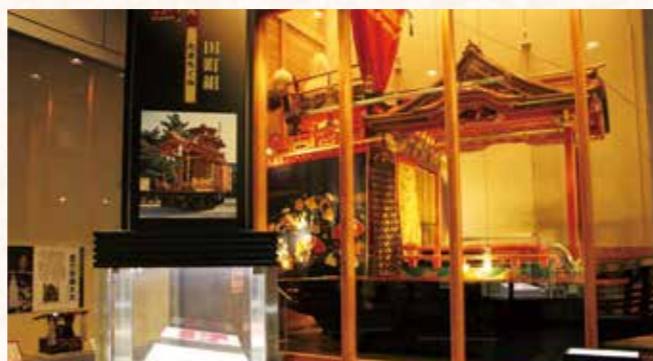
## Tsuchikura Mine Ruins

The site was once a bustling copper mine. Remains of massive concrete structures still remain, making it a popular tourist spot known as the "Laputa of Shiga".



## Nagahama Castle History Museum

The current facility was constructed in 1958 where the castle once stood. Inside the building is a museum showcasing the rich history and culture of Nagahama, and the top floor deck offers a panoramic view of the city and Lake Biwa.



## Nagahama Hikiyama Museum

A museum showcasing the UNESCO Intangible Cultural Heritage event, the Nagahama Hikiyama Festival, held annually in April. Permanently exhibiting two actual festival floats, the museum also showcases magnificent floats and children's Kabuki.

## Keiunkan

This guest house was built to host Emperor Meiji. Visitors can also explore the garden, designated as a national site of scenic beauty. Annually, the Nagahama Plum Bonsai Festival is held here from early January to early March.



## Kaiyodo Figure Museum

The plastic model-exclusive museum where all generations can appreciate. It features dioramas of dinosaurs and animals, as well as life-size models of popular anime characters.



## Kunitomo Gun Museum

At the museum dedicated to matchlock guns, visitors can explore the history of matchlocks, blacksmithing, and crafting methods. You can also hold actual matchlocks.



## Kohoku Wild Birds Center

A wild bird watching facility located on the lake-shore, where nature thrives and hosts numerous waterfowl. In the observation room, visitors can enjoy bird watching through telescopes and stunning sunset views.

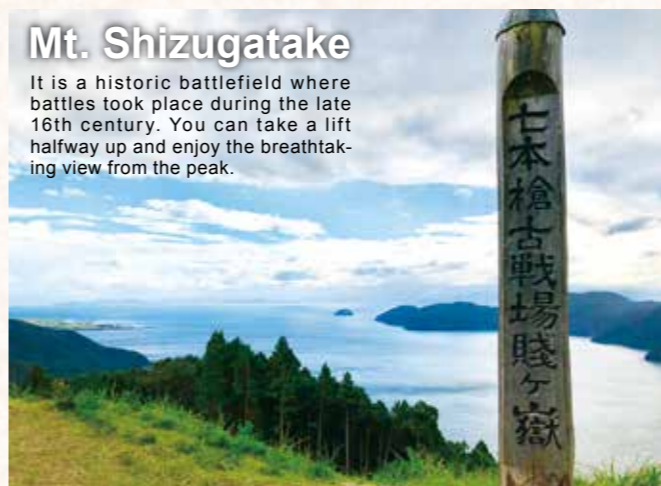
## Takatsuki Kannon-no-Sato History and Folklore Museum

The museum showcases the history and culture of northern Nagahama, known as the "Village of Kannon." It exhibits various cultural properties, including statues of Kannon and other Buddhist and Shinto deities.



## Mt. Shizugatake

It is a historic battlefield where battles took place during the late 16th century. You can take a lift halfway up and enjoy the breathtaking view from the peak.



Lake Yogo in spring



Lake Yogo in the snow

## Lake Yogo

Known as a "mirror lake" for its tranquil surface, the lake is a popular destination for cyclists and hikers. Visitors can enjoy cherry blossoms in spring and snowy landscapes, as well as Japanese pond smelt fishing in winter.



## Noppei Udon

A local specialty dish of udon noodles in a thick broth, topped with various vegetables and grated ginger. It is a perfect choice for winter to warm you up.



## Gourmet Foods in Nagahama



## Salad Roll

Nagahama's specialty bread "Salad Roll" is filled with shredded daikon radish pickles and special mayonnaise.

## Duck Dishes

Duck is Nagahama's winter specialty. Many restaurants offer traditional dishes such as hot pot and sukiyaki made with natural ducks.



## Yakisaba Somen



Nagahama's iconic local dish is somen noodles cooked with grilled mackerel simmered in soy sauce.

